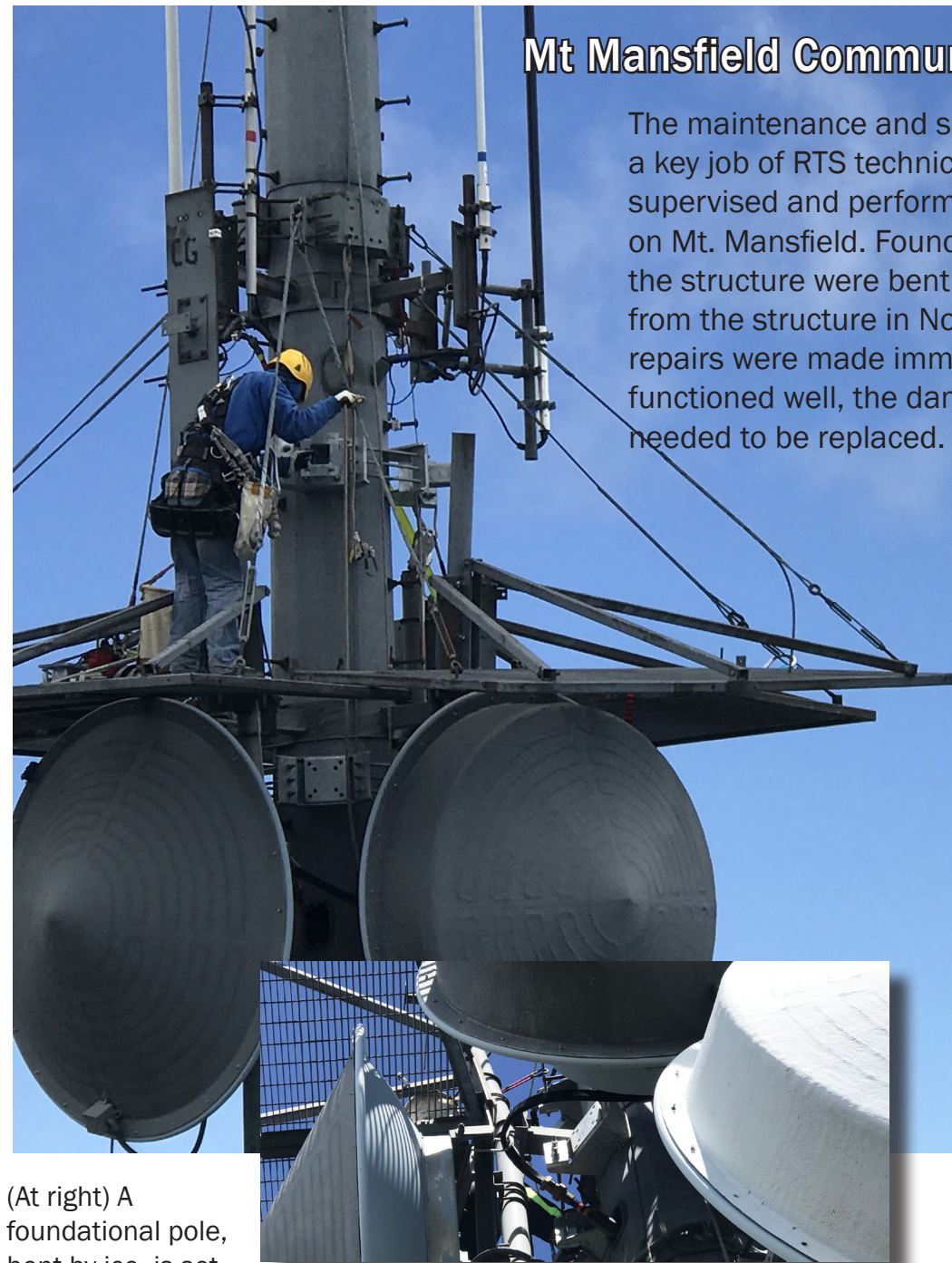


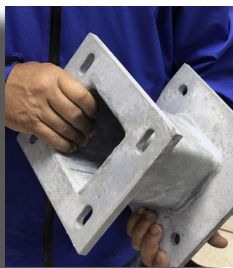
# Mt Mansfield Communication Site Repairs

The maintenance and service of communication sites is a key job of RTS technicians. In June of 2018, RTS supervised and performed repairs to the tower located on Mt. Mansfield. Foundational pipes used to support the structure were bent when tons of ice were shedded from the structure in November, 2016. While temporary repairs were made immediately and the repairs had functioned well, the damaged components ultimately needed to be replaced.

Crews must hike in a quarter-mile up a narrow path from a service road to reach the site. If a winter repair is needed, crews must wear snowshoes to get through snow as deep as 12 to 15 feet. All equipment must be carried in. Each fall, the crew carries in -- via 5 gallon containers -- enough fuel oil to top off the 275 gallon fuel tank to ensure the site maintenance structure maintains the heat needed to keep the supporting equipment from freezing.



(At right) A foundational pole, bent by ice, is set for replacement. Crews also reinforce the structure with large steel brackets.



Everything must be carried in and out of the site by hand. To safely complete maintenance work such as this tower repair, a team of people is engaged on the project.



At the site, a maintenance shed houses radio and electronic support equipment. The 275 gallon fuel tank and generator ensure the equipment will be able to operate in severe weather and power outages.

